



COMPASS
Center for Complex Particle Systems

Join the **COMPASS-ADRF** The Active Duty - Reserve Fellowship Program

for Undergraduate/Graduate Active Duty & Reserve Military Students

Are you interested in contributing to cutting-edge scientific and engineering research?

COMPASS is looking for YOU!

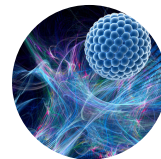
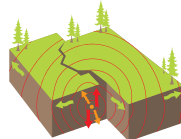
Research Projects with **field-deployable potential**



Advanced Manufacturing
Sustainable Materials
Resource-efficient technologies

COMPASS-ADRF has launched at **North Carolina State University** in **4** research labs within the departments of *Physics, Chemical Engineering, and Materials Science & Engineering* and currently has 5 students enrolled.

Students will engage in research related to **complex particle flow**, **soft particles with complex shapes**, **stress propagation through granular matter**, **nanoparticles characterization** and **AI/ML applied for Material discovery and Neuroscience**



We accommodate the unique schedules and responsibilities of military students, offering **flexible research involvements**



BRIDGE LABORATORY LEARNING WITH PRACTICAL CHALLENGES FACED IN MILITARY DUTY ENVIRONMENTS

Apply Here



compass.engin.umich.edu

compass-adf@umich.edu